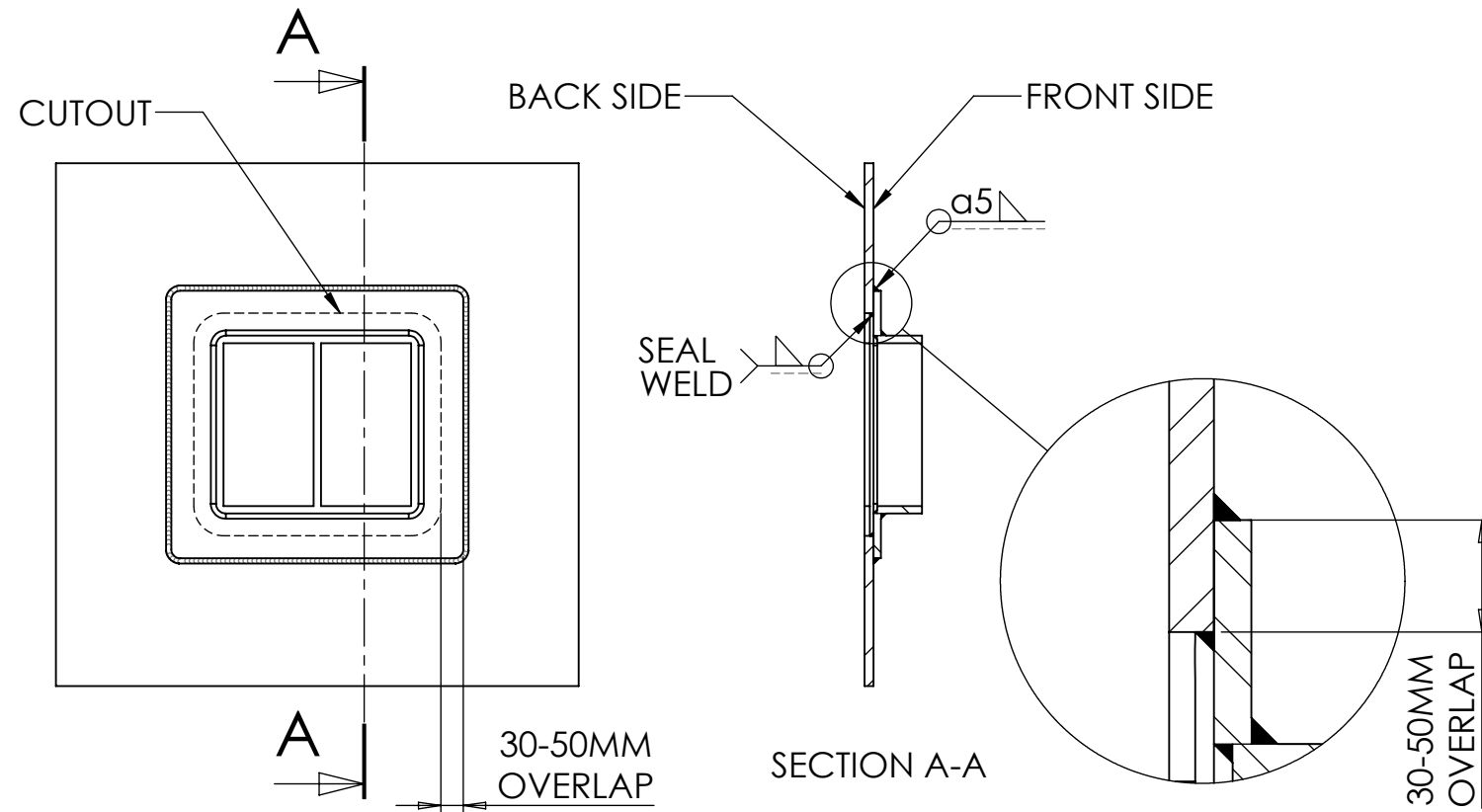


THIS DOCUMENT MUST NOT BE COPIED WITHOUT OUR WRITTEN PERMISSION, AND THE CONTENTS THEREOF MUST NOT BE IMPARTED TO A THIRD PARTY NOR BE USED FOR ANY UNAUTHORIZED PURPOSE. CONTRAVENTION WILL BE PROSECUTED.

## RGSF FRAMES

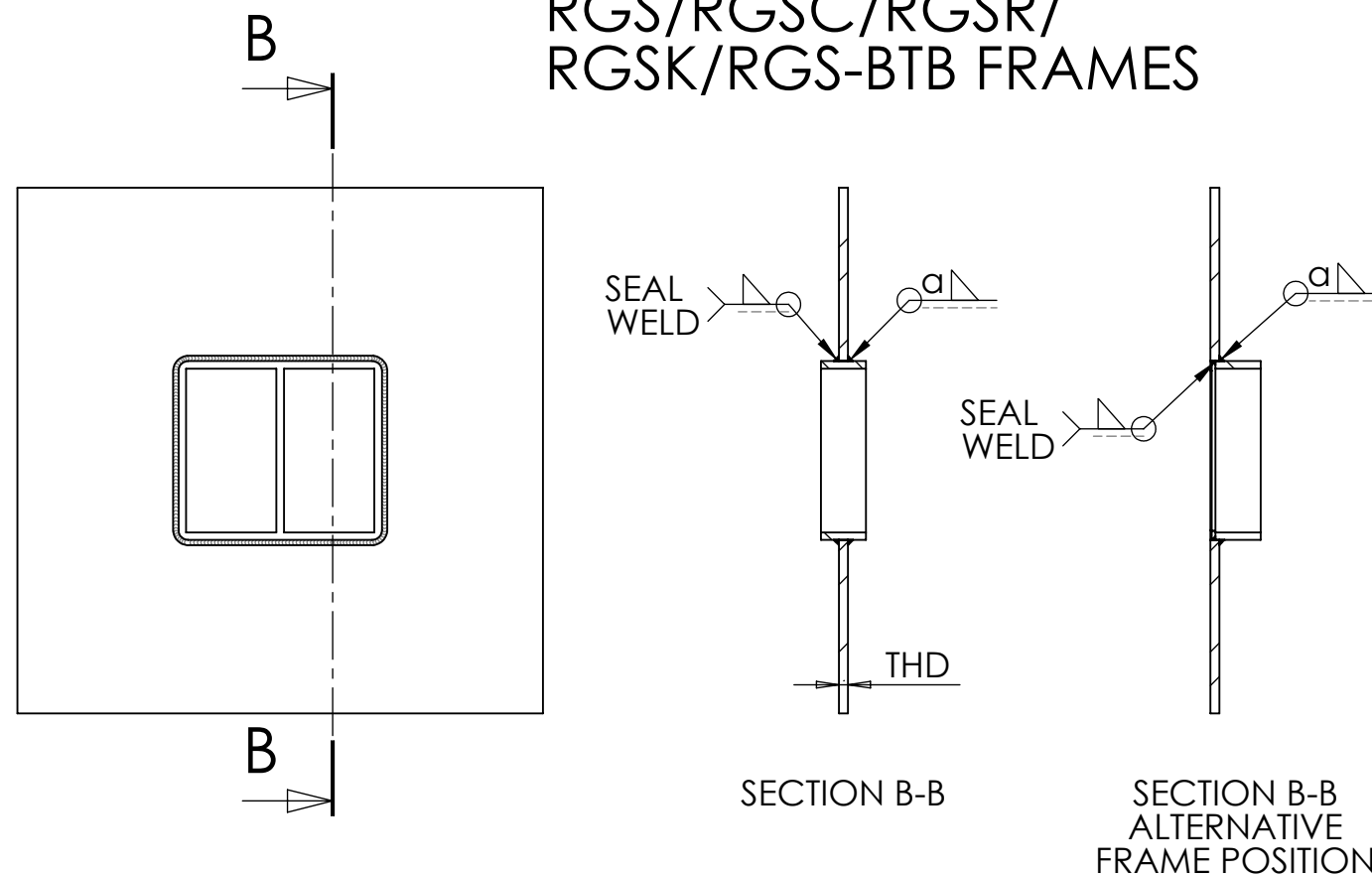


This typical installation drawing is valid for all frame types and combinations.

REVISIONS			
REV.	DESCRIPTION	DATE	SIGNATURE
A		2015-12-10	AK

1. Position the RGSF frame flat to the plate.
2. Tack weld on the front side of the frame in each corner and then in every 200 mm between corners.
3. Continue welding around the front side of the frame in practical order.
4. Complete by seal welding around the rear side of the frame

## RGS/RGSC/RGSR/ RGSK/RGS-BTB FRAMES



This typical installation drawing is valid for all frame types and combinations.

$a = 0,5 \times \text{plate thickness (THD)}$   
but not greater than 7

1. Position the RGS frame into the plate, maximum allowed root gap is 2 mm.
2. Tack weld the frame in each corner and then in every 200 mm between corners.
3. Weld around the front side of the frame, two passes in practical order.
4. Complete by seal welding around the rear side of the frame

Ritad Drawn	Kontr. Check	Granskad Reviewed	Godkänd Approved	Tolerans där ej annat anges Tolerance unless otherwise not stated.	Smst. nr. Assembly drawing no.	Ersätter Replaces	E
AK	AK	JF	BJ	Ytjämnhet där ej annat anges. Surface finish otherwise not stated.	Material	Ersatt av Replaced of	Vikt Weight
151204	151210	151210	151210	Alla mått och uppgifter avser färdig produkt om ej annat anges. All measures and other information refer to finished products unless otherwise not stated.		Kund ordernr. Customer order no	
				ATEX / Ex COMPONENT INSTALLATION DRAWING FOR WELDED FRAMES		Ritn. nr. Draw. no.	Rev.
						1150438	A